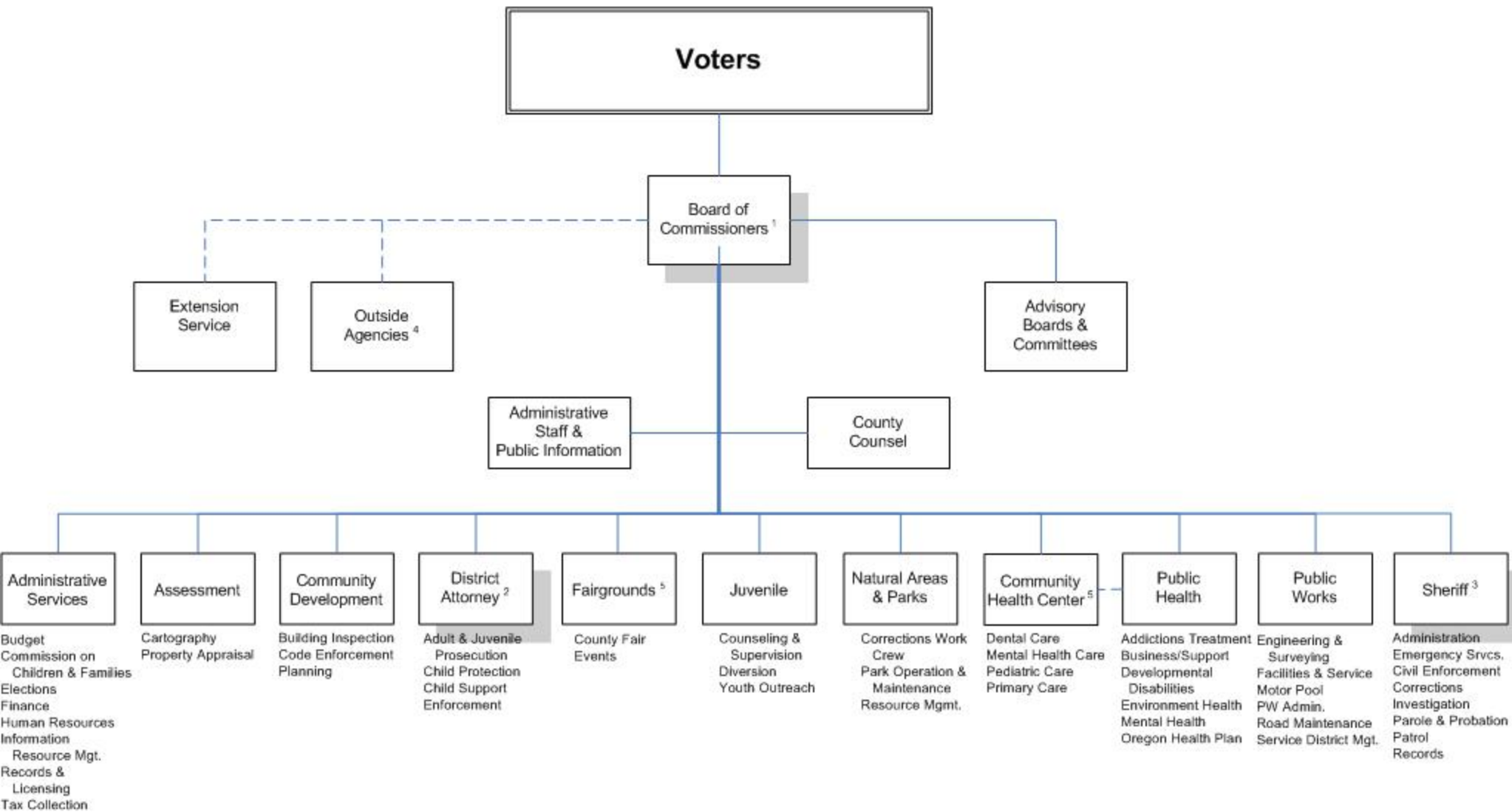


Benton County, Oregon

Functional Organizational Chart

www.co.benton.or.us



Key

Indicates an Elected Official

Notes:

¹ Board of Commissioners are partisan positions

² District Attorney position is a state position elected locally

³ Sheriff is non-partisan office

⁴ Outside Agencies (e.g. – Community Services Consortium, Council of Governments, Historical Society & Museum)

⁵ Governed by an appointed Board