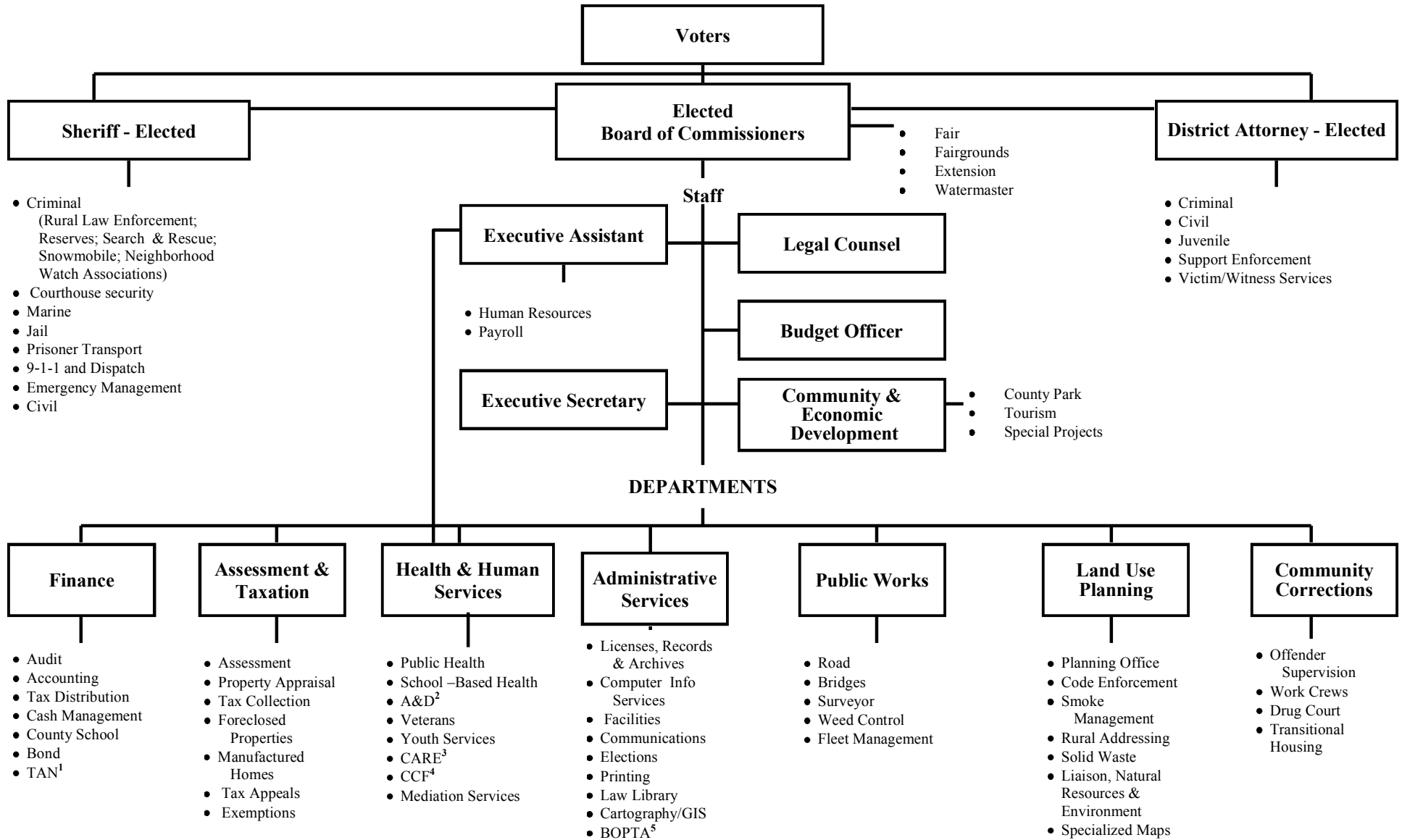


UMATILLA COUNTY ORGANIZATIONAL CHART*



*Note: Umatilla County is a Home Rule County. The Home Rule Charter was adopted by the voters, effective 1993.

¹TAN = Tax Anticipation Notes

²A&D = Alcohol & Drug Program

³CARE = Community Access for Resource Effectiveness Program

⁴CCF = Commission on Children and Families

⁵BOPTA = Board of Property Tax Appeals